

81640

1/2 HP AC Chain Drive Wi-Fi® Garage Door Opener
with Integrated Bluetooth® Technology



81640

1/2 HP AC Chain Drive Wi-Fi
Garage Door Opener with
Integrated Bluetooth Technology



Popular features

AC Motor

Purposefully designed and built to last.

myQ® Connected

Control, secure and monitor the garage from the myQ app anytime, from anywhere.

Secure in-garage delivery

Enables Amazon Key In-Garage Delivery - free for Amazon Prime members.

Security+ 2.0®

Safeguards garage access by sending a new code with every click of the remote.

Invisible light beam system

Auto-reverses the garage door if there is an obstruction.

Posilock® protection

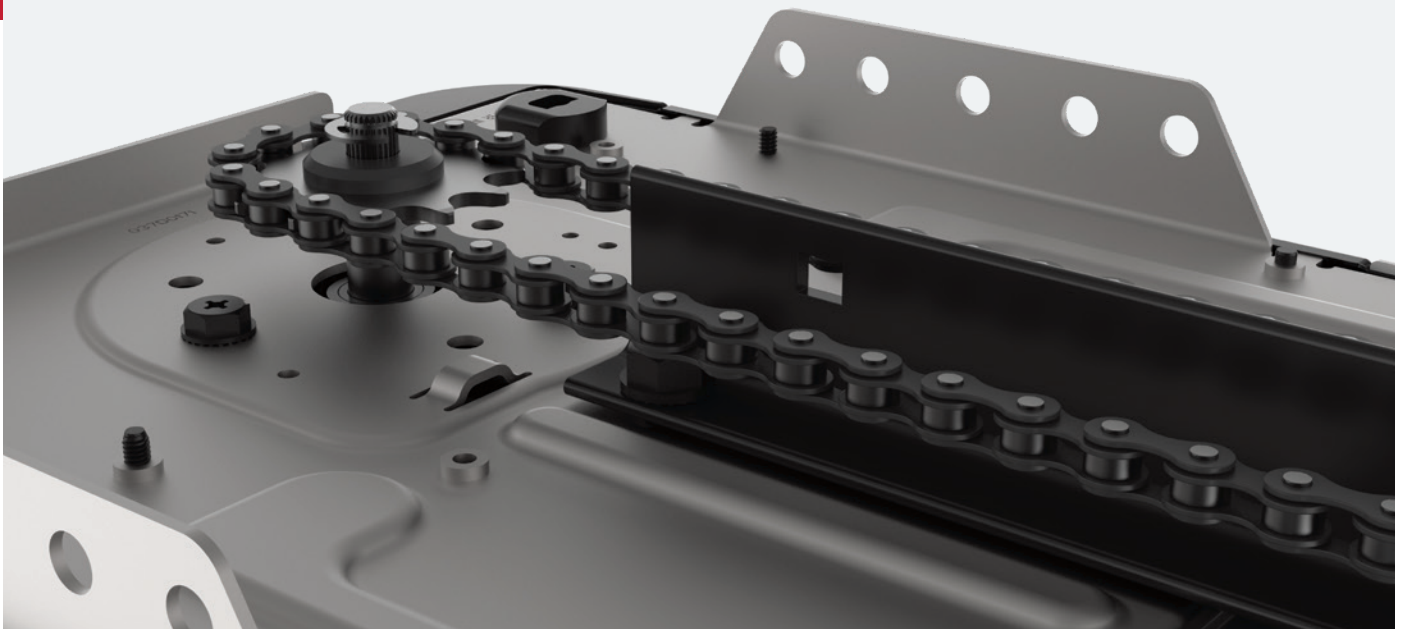
Electronically protects against forced openings of the door.

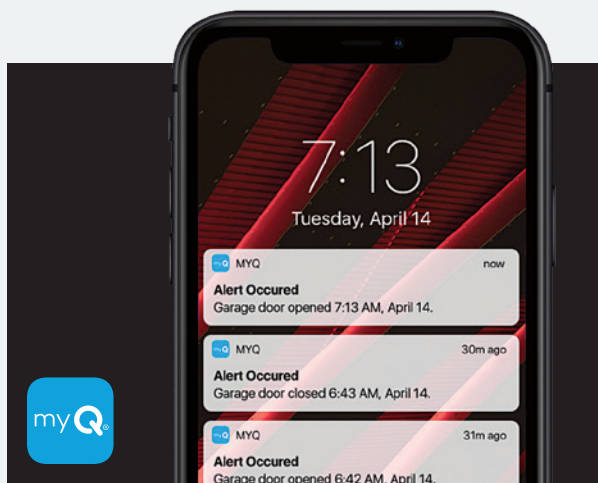
Integrated Bluetooth technology

Reduces setup time and makes it even easier to connect to the myQ app, other myQ devices and smart home technology solutions.

Chain drive system

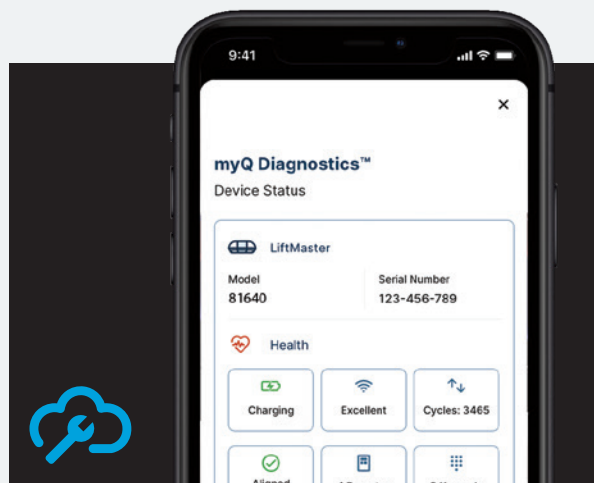
For steady performance and industrial strength.





Do more with myQ

Use the myQ app to control, secure and monitor your garage and conveniently share and manage access to your home without sharing passcodes or keys. Also, take the hassle out of service repair and easily connect to a trusted Dealer through the myQ app.



myQ Diagnostics

As often as you go in and out of your garage each day, it can be stressful when your garage door doesn't open. myQ Diagnostics, in the myQ app, provides real-time insights for your garage door via the Health Report. You will be sent alerts if an issue arises and connected to professional services if needed.

In the box

891LM



1-Button Remote Control

Operates a single opener.

883LMW



Door Control Button

Controls the opener and the opener's lights.

Specifications

Motor

1/2 Horsepower AC, 1,625 RPM, automatic thermal protection, permanent lubrication

Mechanics

- Steel chassis, T-rail and trolley, full chain drive mechanism (16:1 gear reduction and adjustable door arm)
- Auto-force adjustment for changing weather and environmental conditions
- Electronic limits for easy setup
- AC Wi-Fi logic board with built-in surge suppressor (for replacement logic boards, order part 050ACTB)

Power

120V AC, 60 Hz voltage, 6A current rating, UL® Listed, 4' power cord (3-prong)

Speed

7" per second upward, 7" per second downward

Lighting

Max. 1 100-watt lightbulb; Enhanced CFL (compact fluorescent) compatible, max. 26 watts.

Dimensions

| | | | |
|-------------------|-------|-------|--------|
| Rail Options: | 7' | 8' | 10' |
| Installed Length: | 124" | 136" | 160" |
| Max Opening: | 7' 6" | 8' 6" | 10' 6" |

Headroom clearance required: 2"

Warranty

4 Year: Motor
1 Year: Parts

Security+ 2.0

Radio controls:

Operating range: ~200'; Operating temperature: -30°F to 150°F; 1-Button Remote Control (891LM); Remote Control Code Format: Security+2.0; Garage Door Opener: Security+2.0; Security+ 2.0 Anti-burglary coding.

Encrypted controls:

Door Control Button (883LMW); Program remote controls; Turn opener lights on and off; Easy Wi-Fi setup.

myQ Radio

902-928 MHz 50-Channel FHSS (frequency hopping spread spectrum); Provides 2-way communication from garage door opener and myQ accessories; Enables monitoring and control of garage door openers via smartphone or tablet.

HomeLink® compatible (version 4.0 or higher)

May require an external adapter depending on the model and year of your vehicle. Visit [HomeLink.com](https://www.homelink.com) for additional information.

Convenience and safety

Alert-2-close with unattended close operation†; Emergency/quick release; Automatic trolley reconnect; Ventilation/pet opening; Down safety reverse; Up safety stop; Garage door opener capacity of up to 12 remote controls, 1 keyless entry system and 16 myQ devices.

Carton 1 shipping details

Dimensions: 20" x 12" x 10"

Contents: Garage Door Opener Head (81640), Door Control Button (883LMW), 1-Button Remote Control (891LM), The Protector System® Safety Reversing Sensors
Weight: 20 lbs.

Carton 2 shipping details

Dimensions: 10'4" x 5" x 5" (for 7' rail)

Contents: Assembled Solid-Steel Chain T-rail
Weight: 20 lbs.



For purchase and professional install

Visit [LiftMaster.com](https://www.LiftMaster.com)

For partners

Orders: 800.282.6225 | Support: 800.528.2806 | Self service: [LiftMasterTraining.com](https://www.LiftMasterTraining.com)

†WARNING: to reduce the risk of injury to persons — ONLY enable Timer-to-Close and myQ remote operation features when opener is installed on a sectional door.

© 2022 The Chamberlain Group, LLC. All Rights Reserved.

LiftMaster, the Liftmaster logo, myQ and the myQ logo are registered trademarks of The Chamberlain Group, LLC. UL® and the UL logo are trademarks of UL LLC. Wi-Fi® is a registered trademark of Wi-Fi Alliance. HomeLink® and the HomeLink House® logo are registered trademarks of Gentex Corporation. The Bluetooth® word mark and logos are registered trademarks owned by Bluetooth SIG, Inc.
LMGDENPG81640 03/22